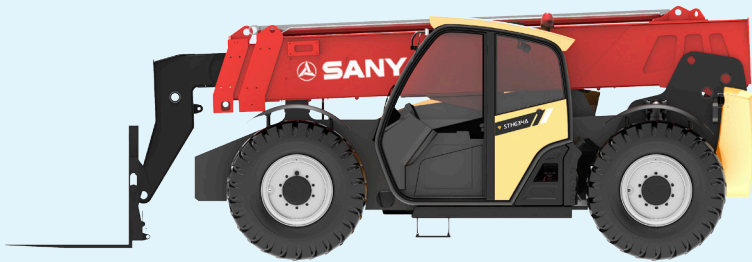


STH634A



Configurations

Item	Parameter
Engine	DEUTZ TD2.9
Power	55KW
Gearbox	DANA 1104F12366
Axle	DANA 212
Tyre	15.00-19.5
Boom Frame	3 Sections Telescopic Boom
Steering Drive Model	4WD/3 Steering Models
Fuel Tank Capacity	135L

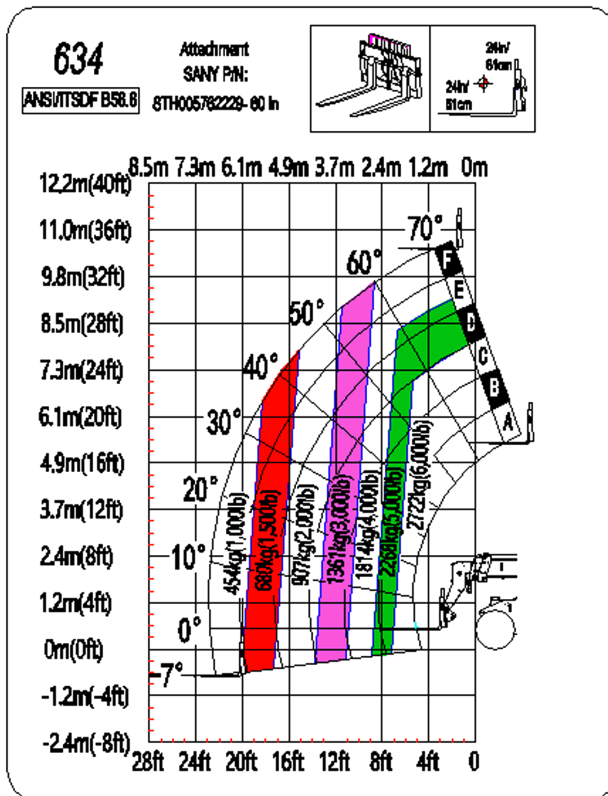
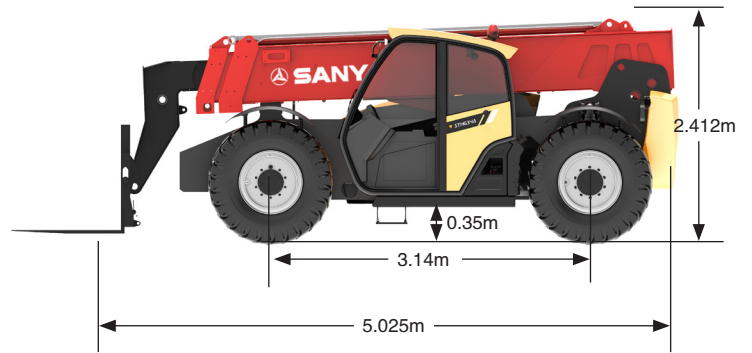
Dimension

Item	Unit	Parameter
Weight	kg	7200
L*W*H	in	196.4×97.2×94
Wheel Base	mm	3140
Minimum Turning Radius	m	4.2
Minimum Ground Clearance	m	0.35
Frame Leveling Angle	°	±10
Maximum Drive Speed	m/h	28
Maximum Traction	KN	68

Performance

Item	Unit	Parameter
Rated Capacity	kg	2720
Lift Capacity at Maximum Height	kg	1814
Lift Capacity at Maximum Reach	kg	454
Lift Capacity at Maximum Height (with outrigger)	NA	NA
Lift Capacity at Maximum Reach (with outrigger)	NA	NA
Lifting Capacity	m	10.4
Maximum Forward Reach	m	7
Maximum Elevation Angle	°	70
Maximum Depression Angle	°	-7
Maximum Lifting Speed	s	11/9
Maximum Descending Speed	s	14/14
Fork Arm Extend Speed	s	10
Fork Arm Retract Speed	s	10

STH634A



SANY MARINE HEAVY INDUSTRY CO., LTD.

SANY Industrial Park, Gaolan Port Economic and Development Zone, Zhuhai, Guangdong, China

Tel +86-756-7266963 Service +86-4008-87-8318

Materials and specifications are subject to change without prior notice. Featured machines in photos may include additional equipment.
© 2021 SANY. All Rights Reserved.

