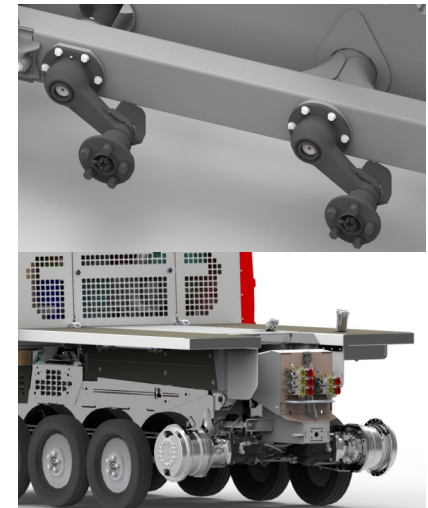
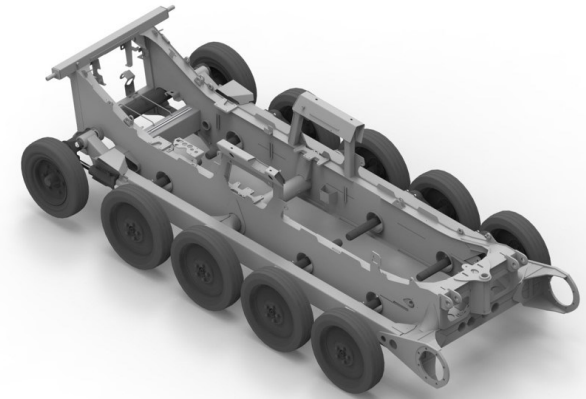


PistenBully®

400 Trail *Narrow*

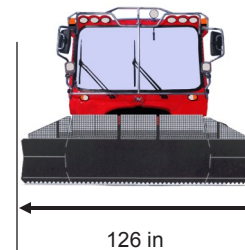
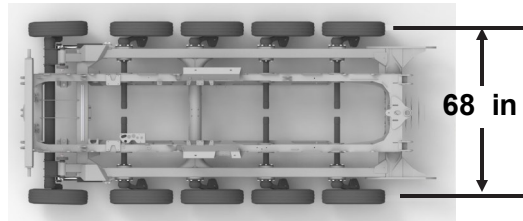
Intuition meets innovation -  
The new PistenBully 400 Trail *Narrow*



[www.pistenbullyusa.com](http://www.pistenbullyusa.com)

BLUEIQ

## Technical data



### Dimensions

<b>Chassis width</b>	68 in	1720 mm
<b>Width with 800 mm tracks</b>	99 in	2520 mm
<b>Width with 975 mm tracks</b>	113 in	2870 mm
<b>U Blade Trail</b>	9 ft 2 in	2.8 m
<b>All Way Blade Trail</b>	10 ft 6 in	3.2 m

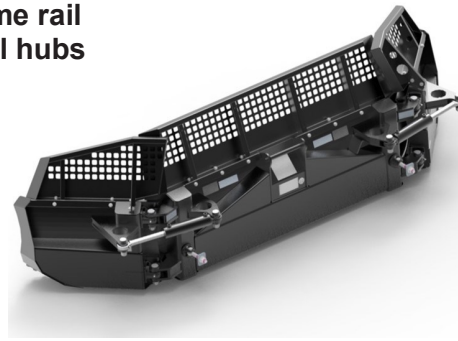
### Chassis

#### Narrow chassis design

Well proven frame structure like the standard PB 400  
 Intermediate axles mounted in towed position—means  
 all flex in same direction for smoother ride  
 Enlarged cutout for the axle in the frame rail  
 Improved grease system for the wheel hubs

### Hydraulics

4 circuits standard; one with float  
 1 additional circuit is optional  
 Pioneer style quick couplings  
 12 V socket at the rear control block



### Attachments

2.8 m U-blade with new steel construction  
 3.2 m All Way Blade with new steel construction  
 and new hydraulics

### Plus

All the great features of the standard 400 Trail

<b>Engine</b>	Cummins QSL 9 diesel, turbocharged, after cooled. EPA Tier 4 Final	
<b>Displacement</b>	8.9 liter	6 cyl
<b>Output (SAE)</b>	400 horsepower	
<b>Maximum torque</b>	1200 ft lb @ 1,500 rpm	
<b>Fuel tank capacity</b>	69 gallons	260 liters
<b>Transmission</b>	Rexroth hydrostatic; infinitely variable	
<b>Steering</b>	Half moon steering wheel, electronic	
<b>Brakes</b>	Hydrostatic; dynamic feedback Two multi-disk parking brakes	
<b>Alternator</b>	28 V / 140 Amps	
<b>Batteries</b>	2 x 12 V / 135 Ah	
<b>Speed, low range</b>	0-12 mph	0-19 km/h
<b>Speed, high range</b>	0-17 mph	0-27 km/h
<b>Fuel usage</b>	From 5 gal/hr	19 liter/hr
<b>Suspension</b>	5 axle independent, torsion bar	
<b>Wheels</b>	14 inch; solid rubber in 3 durometers	
<b>Tracks</b>	X track high performance rubber track	

